

B1.5 Consequences of Demographic Change on Political Attitudes and Political Behavior in Germany



Director/ Hans Rattinger

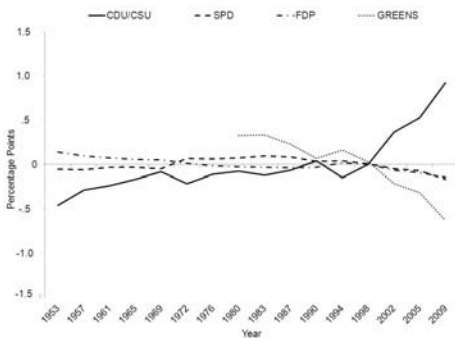
Researchers/ Laura Konzelmann, Michael Bergmann, Corina Wagner

Funding/ Volkswagen Foundation

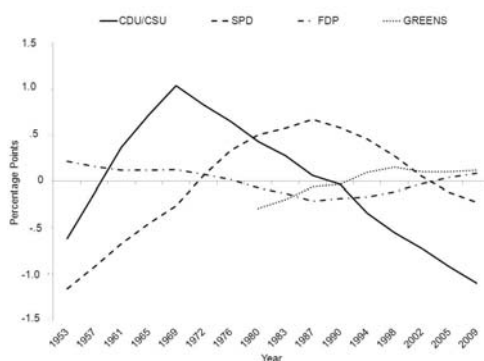
How does Population Ageing Impact on Turnout and Party Vote Shares?

We assess the effects of age and cohort from 1953 to 2009 by using cohort analysis

Average net effect of age (West Germany)

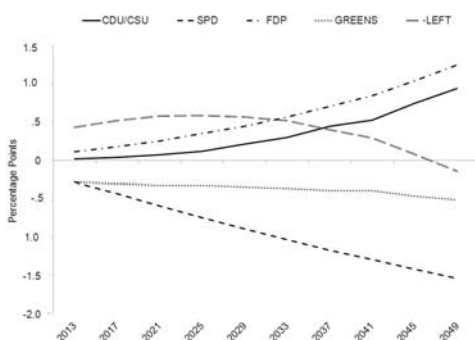


Average net effects of cohort (West Germany)



We apply the effects to the future age population

Average net effects of age & cohort



Our results show those changes that are merely due to shifts in the age structure
According to our forecast the CDU/CSU and FDP are likely to benefit from population ageing, while the SPD will probably be hard hit

Own calculations based on Representative Electoral Statistics

Our Telephone Survey

Representative Sample
+ Oversampling of younger/older people
+ Oversampling of people either living in fast ageing or slowly ageing districts (2011)

Sample Overview (in brackets: row/column percent)

	18-35 Years	36-59 Years	≥ 60 Years	Total
West Germany	828 (27/74)	1101 (36/83)	1157 (37/79)	3086 (100/79)
East Germany	288 (35/26)	223 (27/17)	314 (39/21)	825 (100/21)
Quickly Ageing Districts	126 (17/11)	275 (37/21)	342 (46/23)	743 (100/19)
West Germany	196 (25/18)	200 (37/22)	294 (39/20)	780 (100/20)
Slowly Ageing Districts	56 (25/5)	65 (29/5)	101 (45/7)	222 (100/6)
East Germany	82 (36/7)	58 (25/4)	88 (39/6)	228 (100/6)
Sample without Model Regions	656 (34/59)	636 (33/40)	648 (33/44)	1938 (100/50)
Total Sample	1116 (29/100)	1324 (34/100)	1471 (38/100)	3911 (100/100)

Selected Publications

Journal Articles:

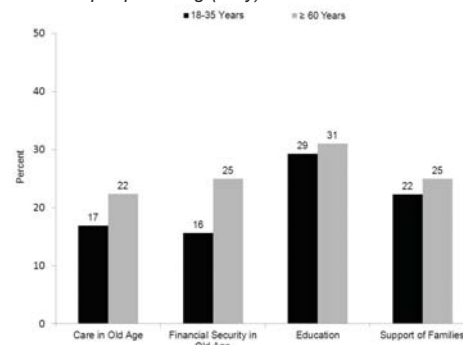
- Bergmann/Konzelmann/Rattinger (2012): Deutschland auf dem Weg in die „Rentner-Demokratie“? – Eine empirische Untersuchung altersspezifischer Einstellungsunterschiede und ihrer Bedeutung für das Wahlverhalten auf Basis einer aktuellen Bevölkerungsumfrage, in: Politische Vierteljahresschrift 53(3): 371-393
- Konzelmann/Wagner/Rattinger (2012): Turnout in Germany in the Course of Time: Life Cycle and Cohort Effects on Electoral Turnout from 1953 to 2019, in: Electoral Studies 31(2): 250-261
- Wagner/Konzelmann/Rattinger (2012): Is Germany going Bananas? Life Cycle and Cohort Effects on Party Performance in Germany from 1953 to 2009, in: German Politics 21(3): 274-295

Do Young and Old Differ in Evaluating Various Policy Areas?

Selected Research Findings:

Younger people are less satisfied than older people especially with regard to 'old policies'

Share of people being (very) satisfied

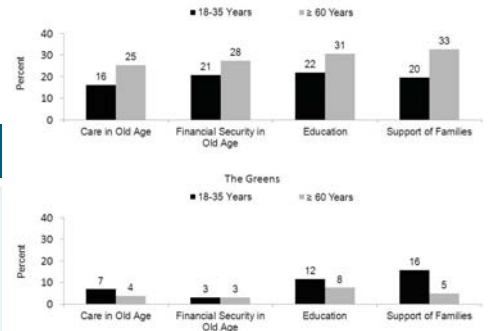


Do Young and Old Differ in Evaluating Political Parties?

Selected Research Findings:

- Younger people regard the CDU/CSU as less competent than older people
- Younger people regard the Greens as more competent than older people (particularly in 'young policies')

Share of people considering party X as competent



Do Age-Specific Determinants of Party Choice Exist?

Selected Research Findings. Presented are only significant old-young differences in regression coefficients concerning the vote for the Greens

- A positive difference indicates that the variable is more relevant for the Green-vote of older voters
- A negative difference indicates that the variable is more relevant for the Green-vote of younger voters (Control variables are included)

Differences in unstandardized logistic regression coefficients

